

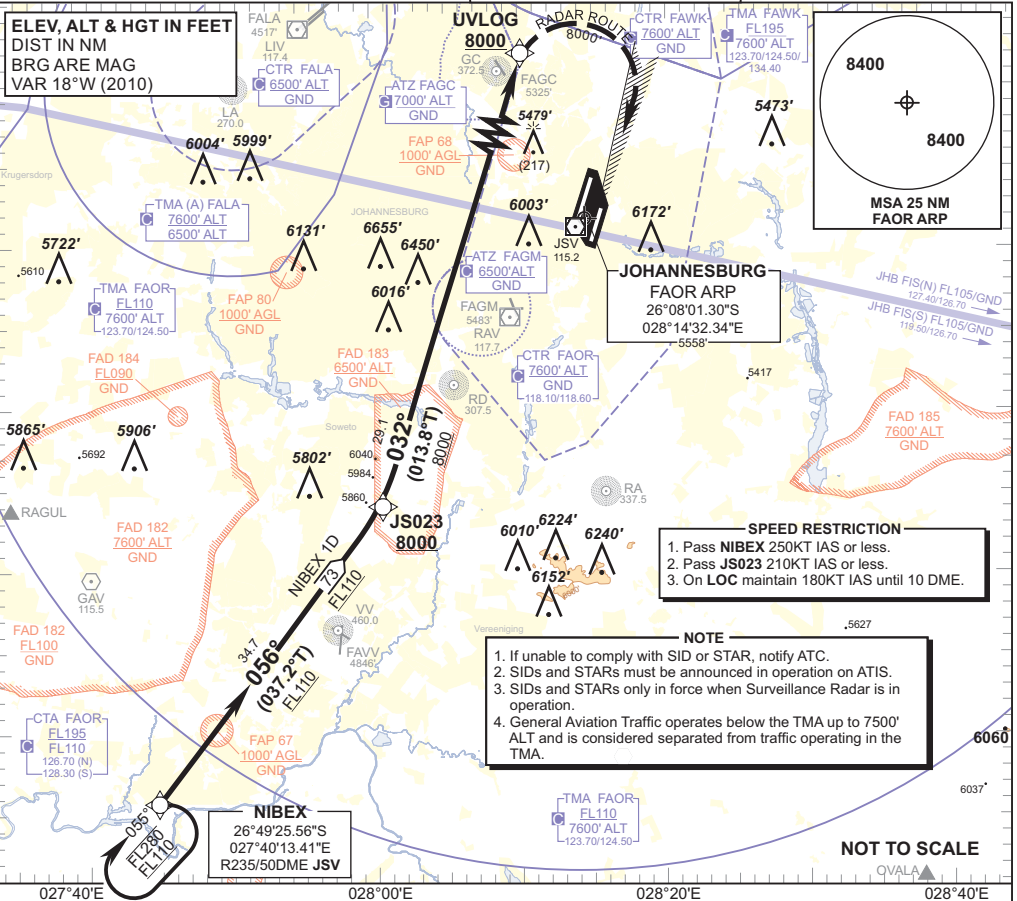
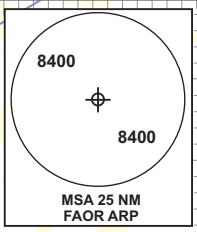
**STANDARD ARRIVAL  
CHART -  
INSTRUMENT  
(STAR)**

**JOHANNESBURG  
(O.R. TAMBO INTERNATIONAL)  
RNAV (GNSS) RWY 21L  
NIBEX 1D**

TRANSITION ALTITUDE  
**8000'**  
TRANSITION LEVEL  
**ATC**

RADAR APP S 124.50 TWR E 118.60  
E 124.50 W 118.10  
W 123.70 ATIS 126.20  
DIR 121.40 115.20  
ACC N 126.70 SMC 121.90

**ELEV, ALT & HGT IN FEET  
DIST IN NM  
BRG ARE MAG  
VAR 18°W (2010)**



**SPEED RESTRICTION**

1. Pass NIBEX 250KT IAS or less.
2. Pass JS023 210KT IAS or less.
3. On LOC maintain 180KT IAS until 10 DME.

**NOTE**

1. If unable to comply with SID or STAR, notify ATC.
2. SIDs and STARs must be announced in operation on ATIS.
3. SIDs and STARs only in force when Surveillance Radar is in operation.
4. General Aviation Traffic operates below the TMA up to 7500' ALT and is considered separated from traffic operating in the TMA.

**NOT TO SCALE**

**NIBEX 1D  
RWY 21L**

**Leave NIBEX for JS023. At JS023 turn left proceeding to UVLOG for radar vectoring onto the ILS LOC RWY 21L.**

**COMMUNICATION FAILURE PROCEDURE (Squawk 7600)**

**Before NIBEX:** Proceed to NIBEX and enter the NIBEX RNAV (GNSS) hold. Hold at last assigned level for minimum 5 MIN, then descend to FL130 in the hold, or maintain last assigned level if below FL130. Leave NIBEX on the "After NIBEX" Communication Failure Procedure.

**After NIBEX:** Continue on the NIBEX 1D RNAV (GNSS) STAR. At JS023 descend to FL090, at UVLOG descend to 8000' ALT. At UVLOG continue on the RNAV (GNSS) RWY 21L to JS3F2 and intercept the ILS RWY 21L and land RWY 21L.

**Note:** Aircraft entering the TMA at FL110 and below are to enter the NIBEX RNAV (GNSS) hold at last assigned level and continue on the routing for the AVAGO 1C STAR.

**Caution:** Holding patterns below FL110 will be conducted partially outside controlled airspace.

In the event of a missed approach with the intention of diverting to an alternate aerodrome, proceed as follows:

- To the North and North-West: Follow the routing for the VASUR 3B SID
- To the North-East: Follow the routing for the EGMEN 2B SID (Jet ACFT) or EXOBI 3B SID (Turboprop ACFT)
- To the South-East: Follow the routing for the APDAK 2B SID
- To the South and South-East: Follow the routing for the RAGUL 3B SID

CHANGE: SPEED RESTRICTION BLOCK